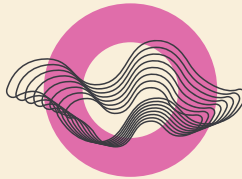




Karsiyaka, the 4th most populous district in **Izmir, Turkey**, is an area that usually encounters significant **earthquake, heatwave, and flood risks**. Despite these challenges, Karsiyaka **boasts rich natural and historical-cultural heritage**.

Through innovative strategies and collaborative efforts, RESILIAGE envisions Karsiyaka as a **model for urban resilience**, where **disaster risk reduction** goes hand in hand with the **preservation of its natural and cultural legacy**. The adaptive governance plans are poised to **empower the community**, ensuring it is well-prepared to face the challenges of the future.

Meet the CORE Lab



Core Lab
**Karsiyaka
TURKEY**

SyRI framework: Adaptive Governance

Main Hazards: Heatwaves

Other Hazards: Earthquakes, Floods



This CORE Lab is part of RESILIAGE, an Horizon Europe funded project and will focus on **Adaptive Governance** aiming to increase resilience behaviour related to innovative and adaptive governance schemes and planning, which involve diverse stakeholders and citizens in all the phases of Disaster Risk Management through collaborative processes.

Together we can build a more resilient community!

CONTACT US

info@resiliage.eu

FOLLOW US

[f](#) [@](#) [X](#) [in](#) [v](#) @ResiliageEU

OUR CONSORTIUM



Politecnico
di Torino



LOBA®



HANEFISTIMO KPIETIE
UNIVERSITY OF CRETE



Røde Kors
Trondheim



T.C. KARSIYAKA
BELEDIYESI



UNESCO
Global Campus



naturtejo
GEOPARK
UNESCO
Global Geopark



ESCOLA NACIONAL DE
BOMBEIROS



CITTADISANZ
PTVA



volies
Asociación